

# ASBURY

A DIVISION OF ACS INDUSTRIES, INC.®

## *Premium Heavy Duty and Specialty Buckets*

### **INSIDE:**

**PRIMARY DIGGING:** First cuts

**RE-HANDLE:** Move mountains

**SIDE-DUMP:** Rehandle in tight spaces

**MULTIPURPOSE:** 4 applications in 1

**ROCK:** Extreme impact & abrasion

**SLAG:** Extreme heat & abrasion



Clay  
Dirt  
Gravel  
Limestone  
Salt  
Sand

# General Purpose Bucket

## Heavy duty bucket for 'first-cut' applications

An excellent primary digging bucket for materials up to 3,000 lbs. per cubic yard.

The flat-bottom design penetrates materials efficiently, minimizing wear on tires and drive train while reducing fuel consumption and cycle time.

### Options

- Bolt-on Edges with Skidpads
- Teeth and Edge Segments
- Latch Hook
- Pin-On or Coupler Equipped

### Choose the correct bucket style for your application

#### Sloped bottom



Sloped Bottom Bucket wedges below loose material promoting boil to enhance bucket fill.

#### Flat bottom



A flat bottom bucket slices into undisturbed materials, enhancing penetration for better breakout and fill.



Coal  
Gypsum  
Topsoil  
Shale  
Mulch

# Material Handling Bucket

## A stronger light material bucket for harsh conditions

Constructed of durable high-strength steel, yet still fairly light. These hard working buckets are designed to re-handle materials up to 2,500 lbs. per square yard.

Ideal for light materials that may freeze or working on concrete surfaces.

Provides increased capacity in light applications while reducing fuel consumption and cycle times.

### Standard

- Bolt-On Edge and Skidpads

### Options

- Pin-On or Coupler Equipped



# Side Dump Bucket

## Re-handling in tight spaces

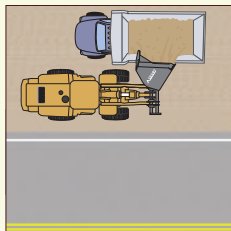
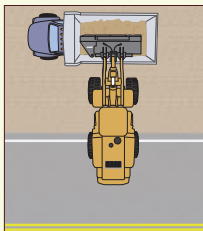
Parallel side-dumping for when there is less room to maneuver. High dump angle for material discharge and triple-shear hinge pin design for long life and strength.

### Standard

- Bolt-On Edge & Skidpads

### Options

- Lift Hooks
- Right-Hand Dump
- Pin-On or Coupler Equipped



### Increased Traffic Safety

The additional versatility of a side-dump bucket increases safety and reduces traffic disruption.

Less maneuvering means faster cycle times, reduced fuel cost and increased project efficiency.



Road Work  
Trench Back Filling  
Tunnel Work

# Multipurpose 4-in-1 Bucket

## Four applications in one attachment

A versatile bucket ideal for grading, clearing and digging. This premium quality bucket includes the features that has made the Asbury name synonymous with productivity and durability.

### Standard

Jumper Hoses

### Options

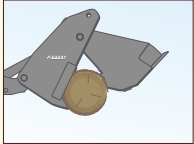
Bolt-on Edges with Skidpads

Teeth and Edge Segments

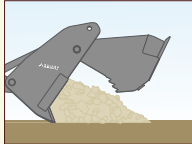
Latch Hook

Pin-On or Coupler Equipped

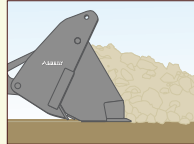
Grapple



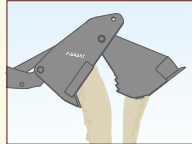
Doze



Rehandle



High Dump



Land Clearing

Digging

Grading

# Rock Bucket

## Abrasion and Impact Resistance

Designed for severe, quarry-type applications in material weighing up to 3,500 lbs/cubic yard.

The flat bottom design improves breakout & bucket fill and simplifies rebuilds.

### Standard

Rock Guard\*

\*on buckets 6 yards and up

### Options

Edge Style

Weld-on Teeth & Segments

Robotic Hard-Facing

Wear Shrouds

Bolt-On Edges

Material Grades

Weld-On Edge

Customize your Asbury Bucket to fit your specific work environment. Straight edge provides higher breakout force and increased dump clearance. Spade edge offers increased penetration.

Straight Edge



Spade Nose



Modified Spade



Quarries

Overburden Removal

Broken Concrete

Cold Slag

# Hot Slag Bucket

## Heat & Abrasion Resistance

Years of experience with slag processors has led to the most durable hot slag bucket available.

Specified for use in slag processing centers and steel mills where extreme heat from molten material and high abrasion & impact from cooled material make one of the toughest working environments on earth.

Designed to reduce cost-per-hour. Easiest bucket to rebuild.

### Options

Straight, Spade, or Modified Weld-In Edge

Weld-on Teeth and Segments

Robotic Hard Facing

Wear Shrouds

Weld-On Edge

Abrasion Reducing Gussets

Proprietary Wear Materials

Long-Wear Pins and Bushings

**ACS also rebuilds non-Asbury slag buckets**



Hot Slag



# Coupler Options

When different jobs are performed with one machine using a variety of worktools, a quick coupler that can be operated from the cab is essential for fast, safe work tool changes.

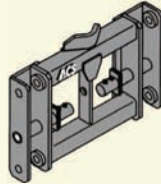
## Pro Series 2000

The compact design balances strength with performance, keeping the payload close to the loader for the closest CG in the industry. Features the ACS original single-point hookup design for fast, smooth coupling — even on uneven terrain.



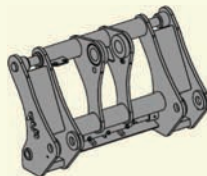
## Series 1000

Fully-supported legacy coupler system that established our reputation. Used in private and government fleets and highly regarded for its dependability — we still make it because you still demand it.



## Four-Point Systems

Our rugged four-point coupling systems can interface seamlessly with all of your JRB, Volvo or Caterpillar style coupler-equipped attachments.



Change attachments in under ten seconds with an ACS hydraulic quick coupler.

# Other Attachments Available from ACS



### Wheel Loader Attachments

#### COUPLER SYSTEMS

#### BUCKETS

#### GRAPPLES

- Trash Grapple
- Scrap Grapple

#### FORKS

- Construction Duty
- Top Clamp
- Hydraulic Adjustable
- Pipe Grapple
- ITA

#### LIFTING BOOMS

#### RAKES

- Clearing
- Stacking
- Grapple

#### RAIL CAR COUPLERS



### Dozer

#### RAKES



### Excavator Attachments

#### COUPLER SYSTEMS

#### BUCKETS

- Tilt Bucket
- Heavy Duty
- Severe Duty
- Ditch Clean-Out
- Material Handling

#### THUMBS

- Pin-On Thumbs
- Weld-On Thumbs

#### GRAPPLES

#### RAKES



### Loader Backhoe

#### COUPLER SYSTEMS

#### BUCKETS

- Loader
- Backhoe

#### FORKS

#### THUMBS

# ACS

INDUSTRIES, INC.®

**Quality That Works**

Crafted in the USA



### Corporate Office

2151 Mogadore Road  
 Kent, OH 44240  
 tel: (800) 321-2348  
 fax: (330) 678-0859

### Washington Office

19602 60th Avenue  
 Arlington, WA 98223  
 tel: (360) 474-1940  
 fax: (360) 474-9941

[www.acs-coupler.com](http://www.acs-coupler.com)